

HSMC SATA demo board [AB11-HSMCSATA]

Manual [Ver1.0E]

Introduction

Thank you for choosing HSMC SATA demo board [Part Number: AB11-HSMCSATA] (“demo board” in this manual.) The demo board is HSMC mezzanine card and provides SATA interface by high speed serial interface in HSMC so that user can evaluate SATA-IP from DesignGateway.

User can evaluate real 2.5” SATA device operation by the demo board along with the following Altera evaluation kit.

- Stratix4GX: DK-DEV-4SGX230N
- ArriaIIGX: DK-DEV-2AGX125N
- Cyclone4GX: DK-DEV-4CGX150N

The demo board can supply 5V power of SATA device generated from 12V power via HSMC so that external power supply is not necessary.

Board Appearance

The demo board size is 78mm width and 30mm length.

Following figure-1 shows demo board appearance.

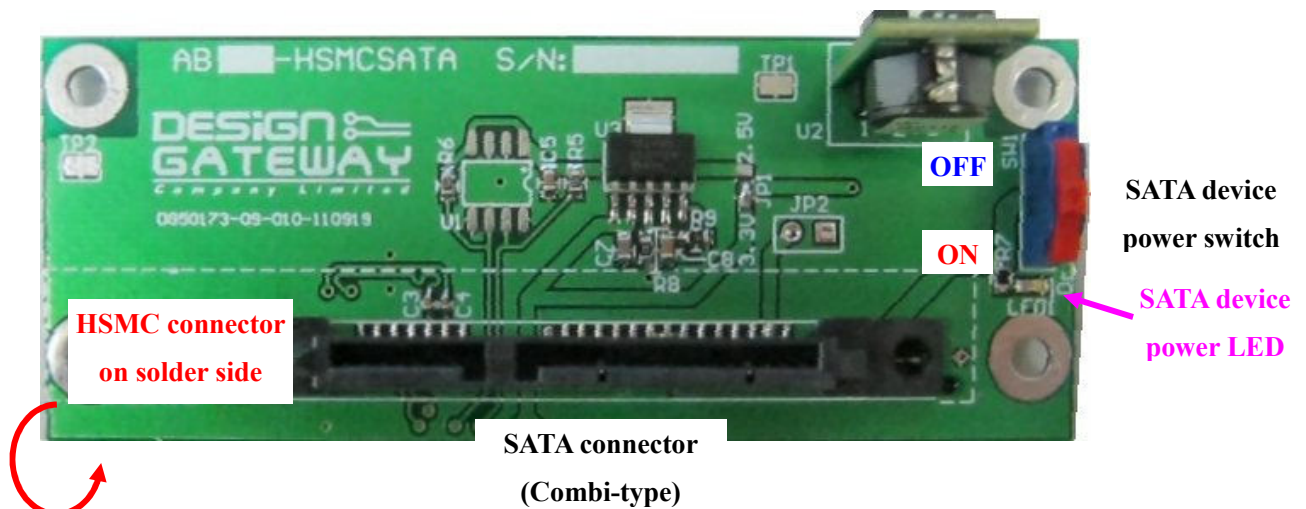


Figure-1: AB11-HSMCSATA board appearance

Connection to the FPGA board

Connect the demo board with the HSMC connector (‘HSMA’ channel that locates close to the PCI metal bracket) on the Altera board

The demo board also can be connected to another HSMC connector (‘HSMB’ that locates far side from PCI metal bracket), however, sof-file for evaluation is designed to use ‘HSMA’ channel.

When insert or remove SATA device to/from the demo board, set SATA device power switch to the off position on the demo board.



Disclaimer

DesignGateway is exempted from any damage to the connected SATA device or FPGA board.
DesignGateway does not guarantee transfer speed performance.

[Inquiry]

URL : <http://www.design-gateway.com/>

Email : <mailto:sales@design-gateway.com>

Revision History

Revision	Date	Description
1.0E	17-Jul-2012	Release English manual

AB11-HSMCSATA schematic

