

# HCTL-IP Demo Instruction

Rev1.7 8-May-18

This document describes the instruction to run SATA HCTL-IP demo on FPGA development board by using AB09-FMCRAID board. The demo is designed to write/verify data with SATA device. For 7-series board, the design supports both SATA-II and SATA-III device. For Ultrascale board, the design supports only SATA-III device. User controls test operation through Serial console.

## 1 Environment Setup

To run the demo on FPGA development board, please prepare following environment.

- 1) FPGA development board: AC701/KC705/VC707/VC709/ZC706/KCU105/ZCU102/VCU118/Zynq Mini-ITX
- 2) PC with Xilinx programmer software (Vivado) and Serial console software such as HyperTerminal
- 3) SATA cable for Zynq Mini-ITX or AB09-FMCRAID board for other FPGA boards
- 4) One SATA-II/III device connecting at CN0 of AB09-FMCRAID board  
*Note: KCU105/ZCU102/VCU118 board support only SATA-III device*
- 5) Xilinx Power adapter for Xilinx board or ATX power supply for Zynq Mini-ITX board
- 6) micro USB cable for programming FPGA between FPGA board and PC
- 7) mini/micro USB cable for Serial console connecting between FPGA board and PC
- 8) For AC701 board only, connect CLK SMA board to the board.

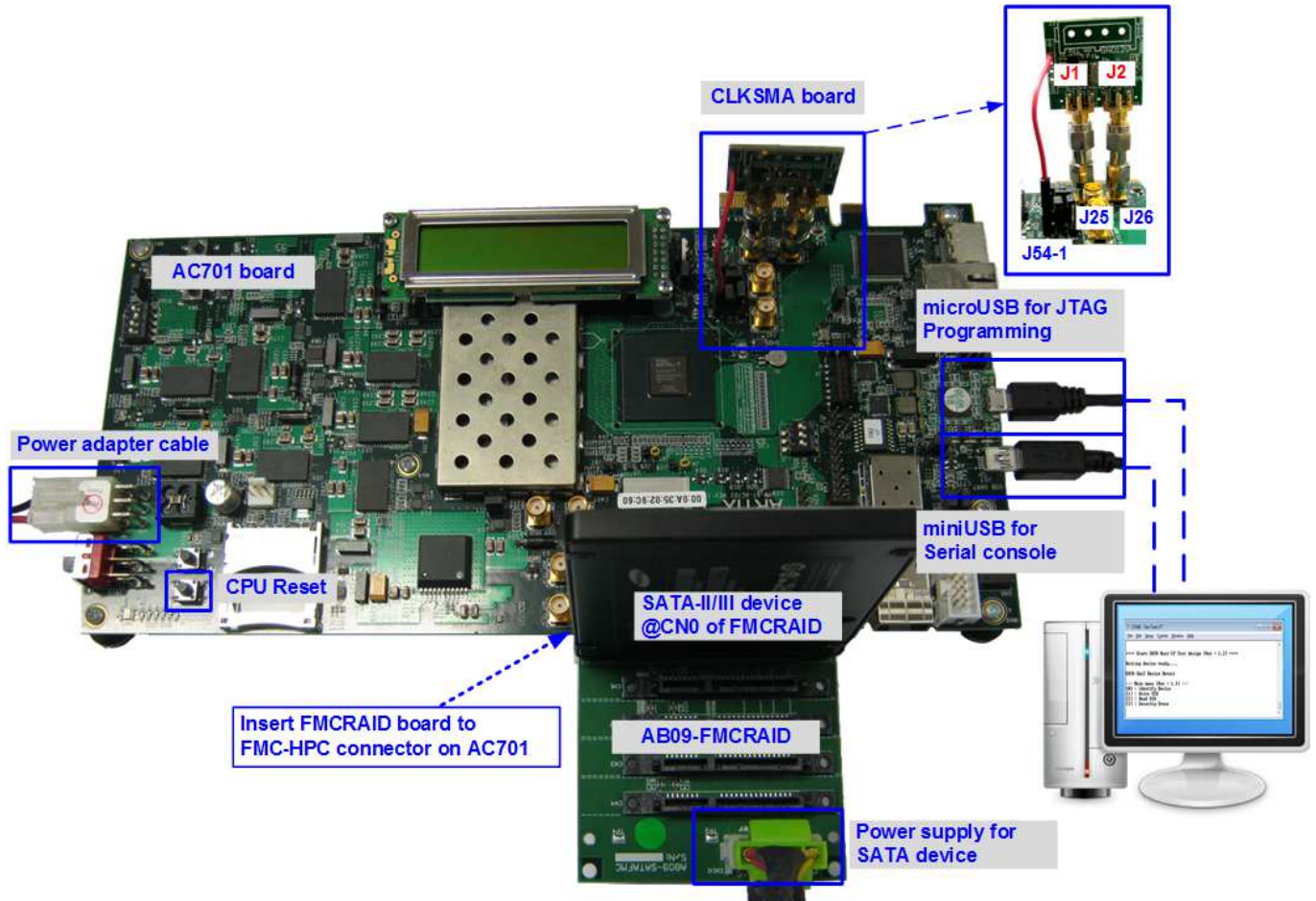


Figure 1-1 HCTL-IP demo setup on AC701

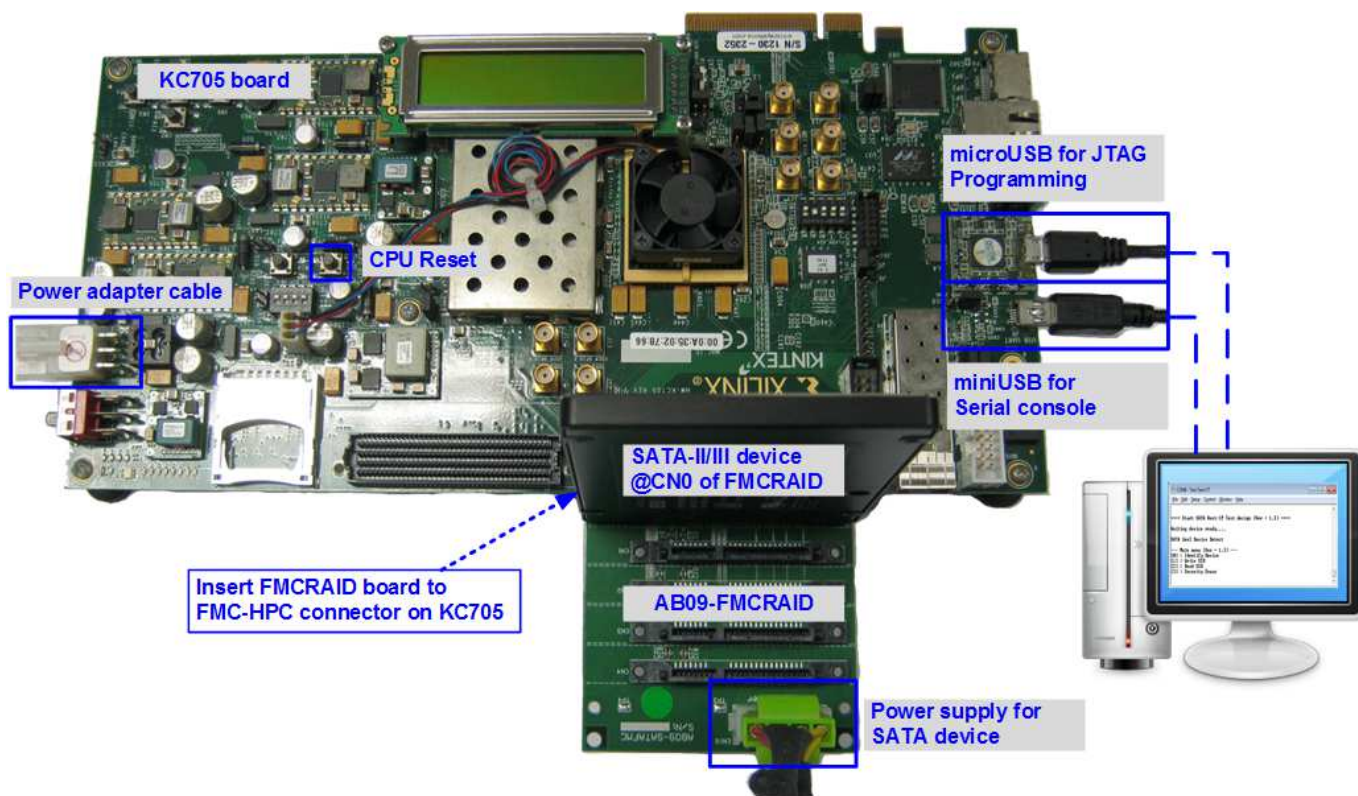


Figure 1-2 HCTL-IP demo setup on KC705

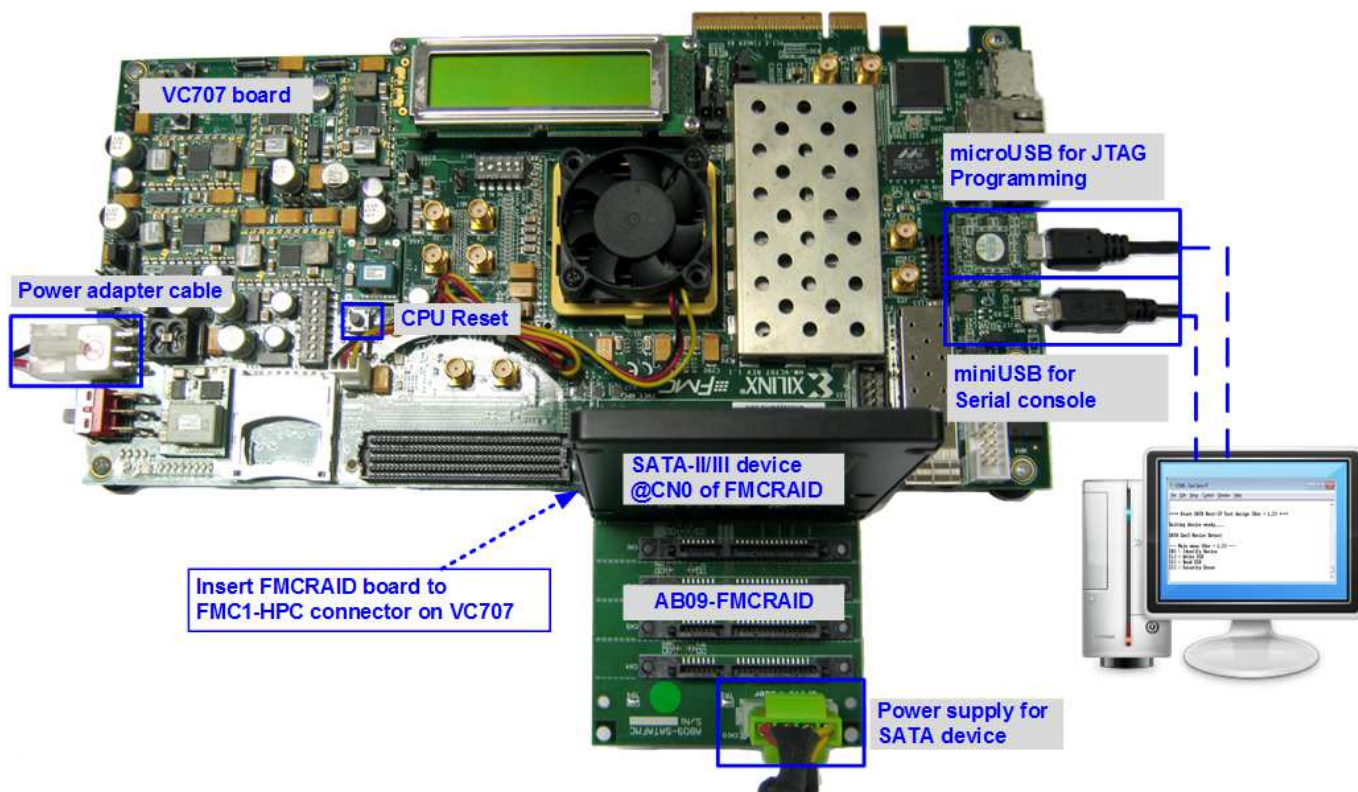


Figure 1-3 HCTL-IP demo setup on VC707

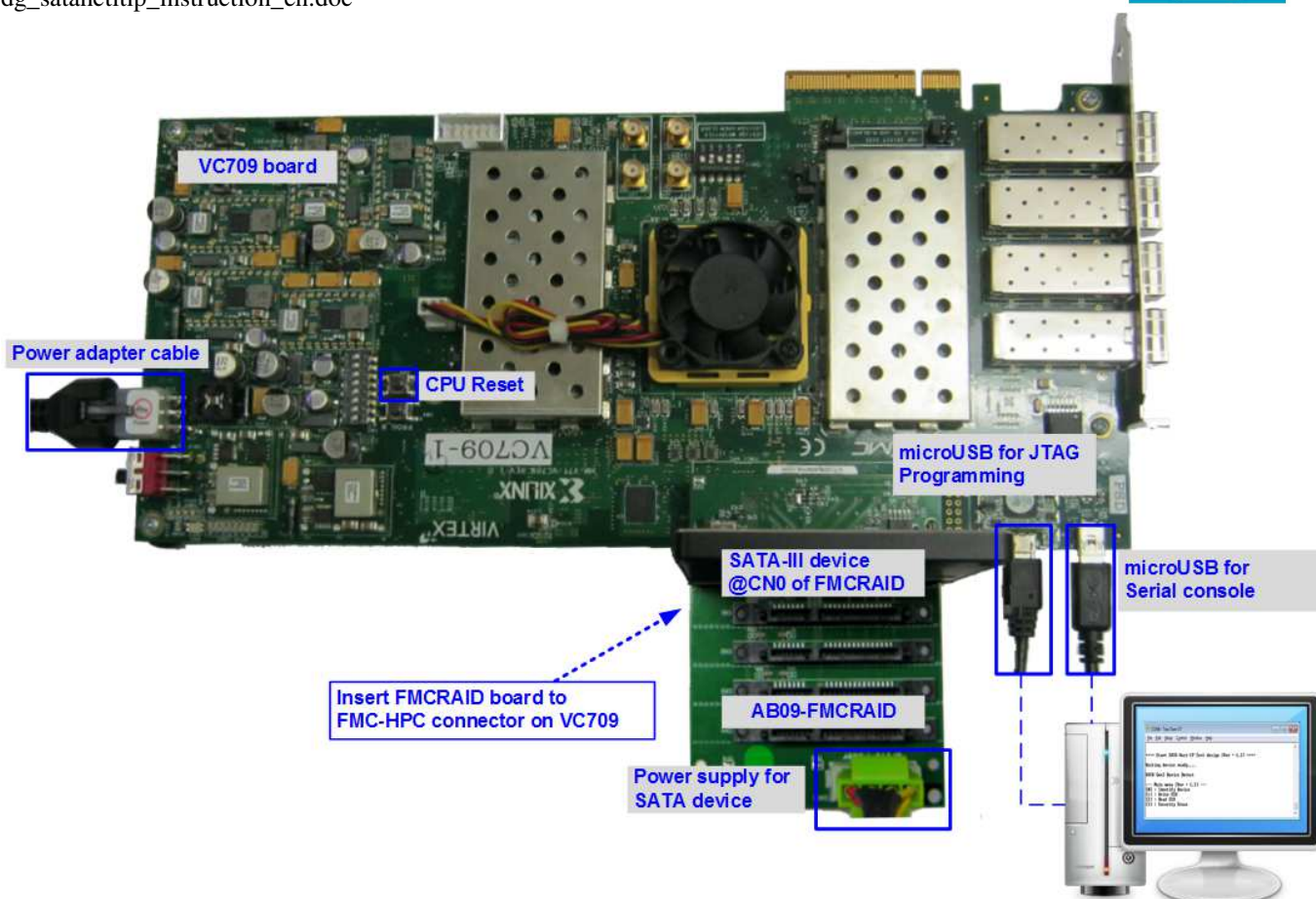


Figure 1-4 HCTL-IP demo setup on VC709

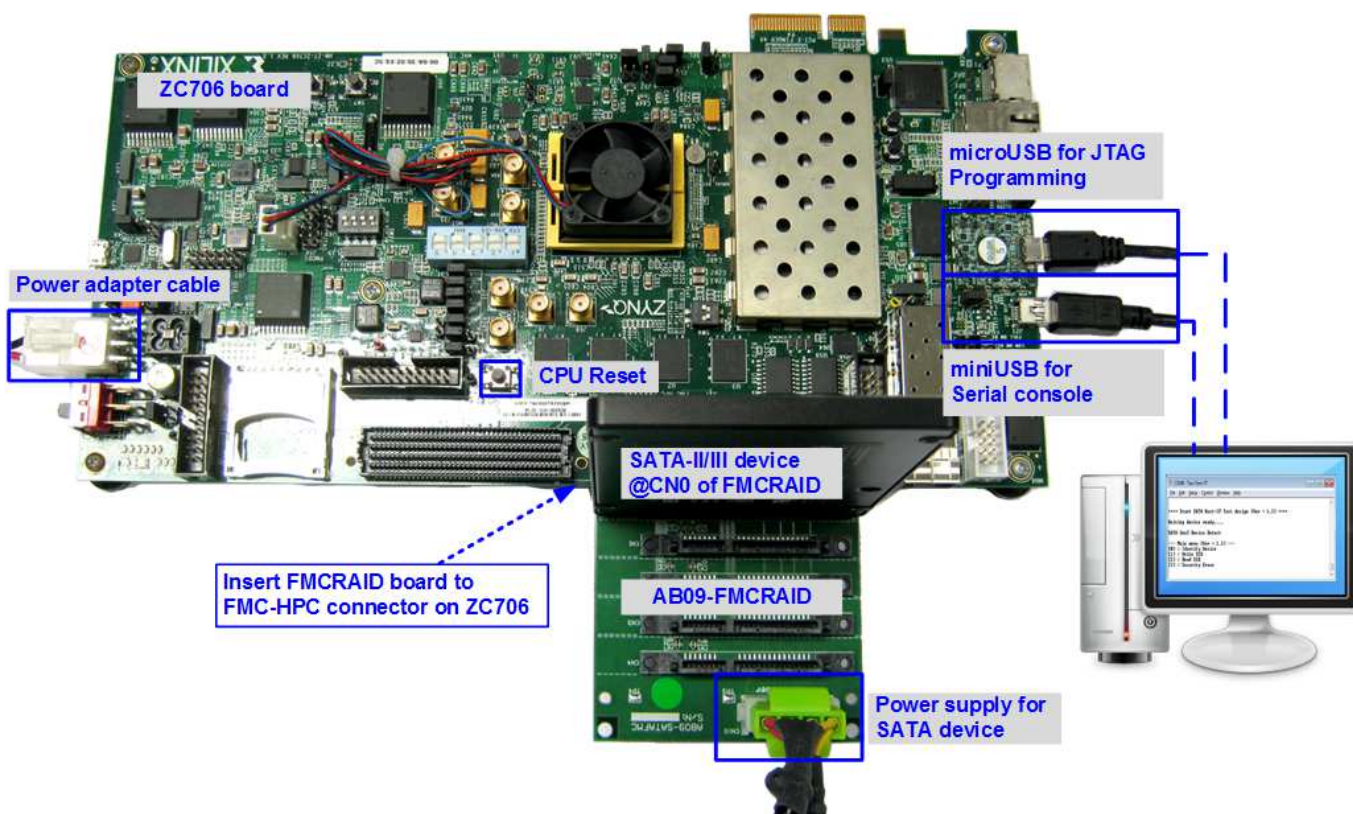


Figure 1-5 HCTL-IP demo setup on ZC706

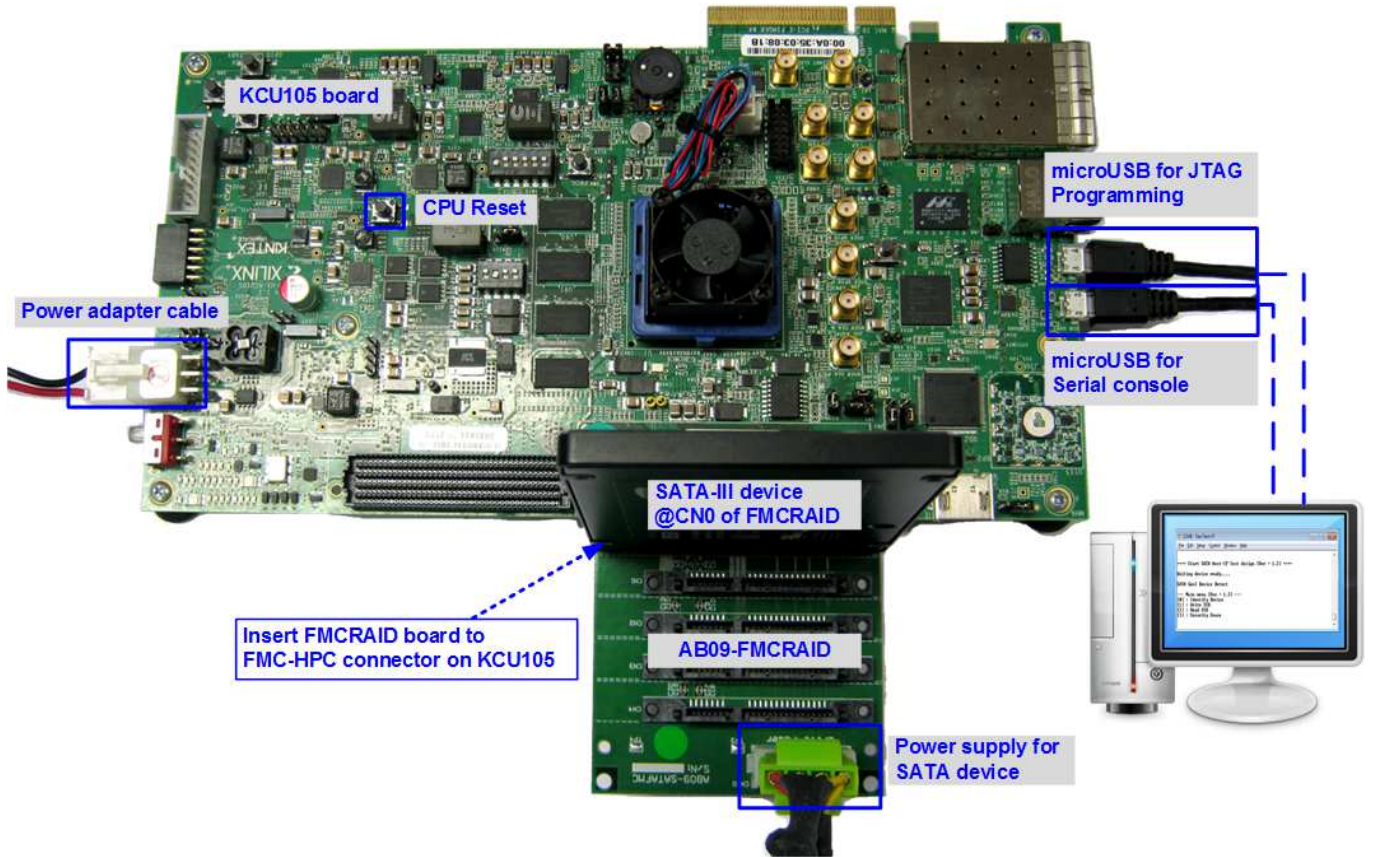


Figure 1-6 HCTL-IP demo setup on KCU105

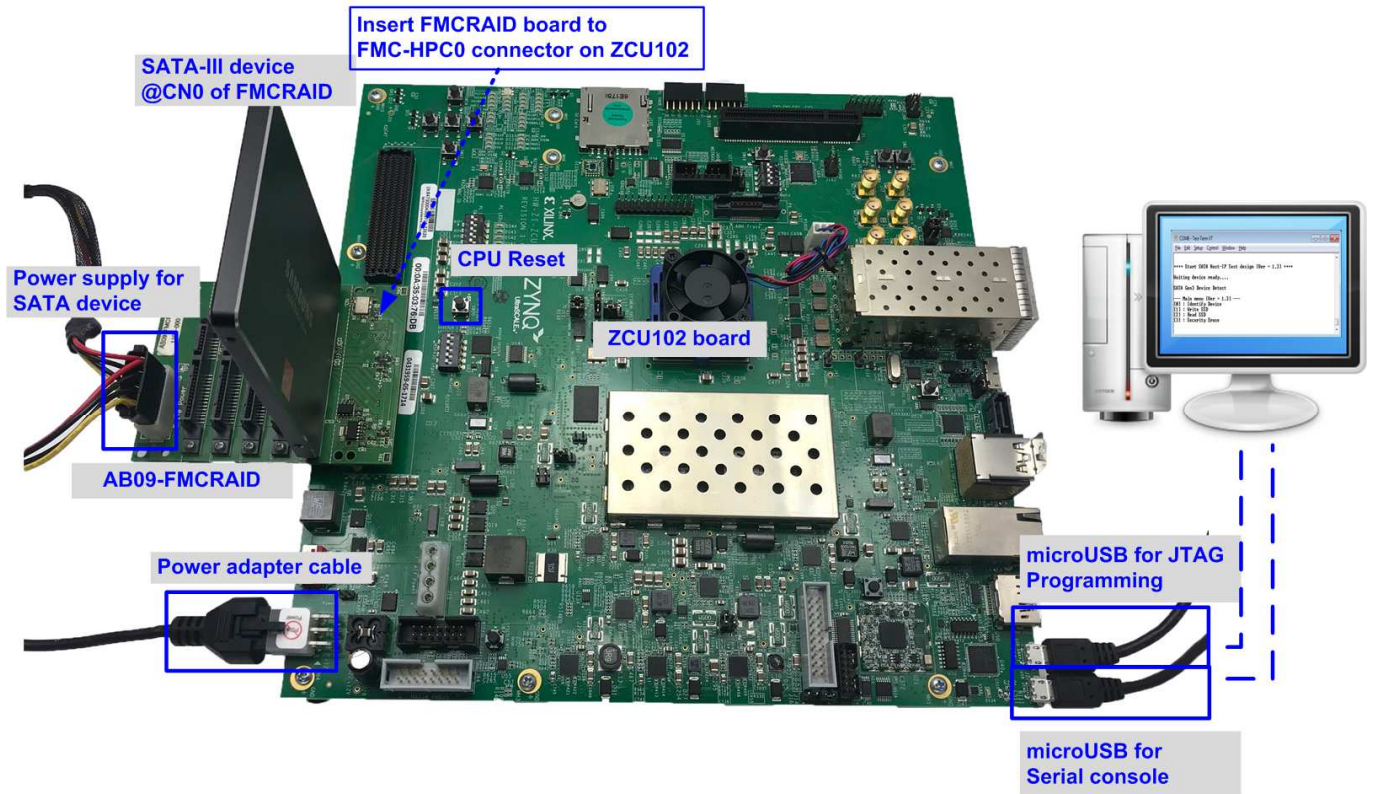


Figure 1-7 HCTL-IP demo setup on ZCU102

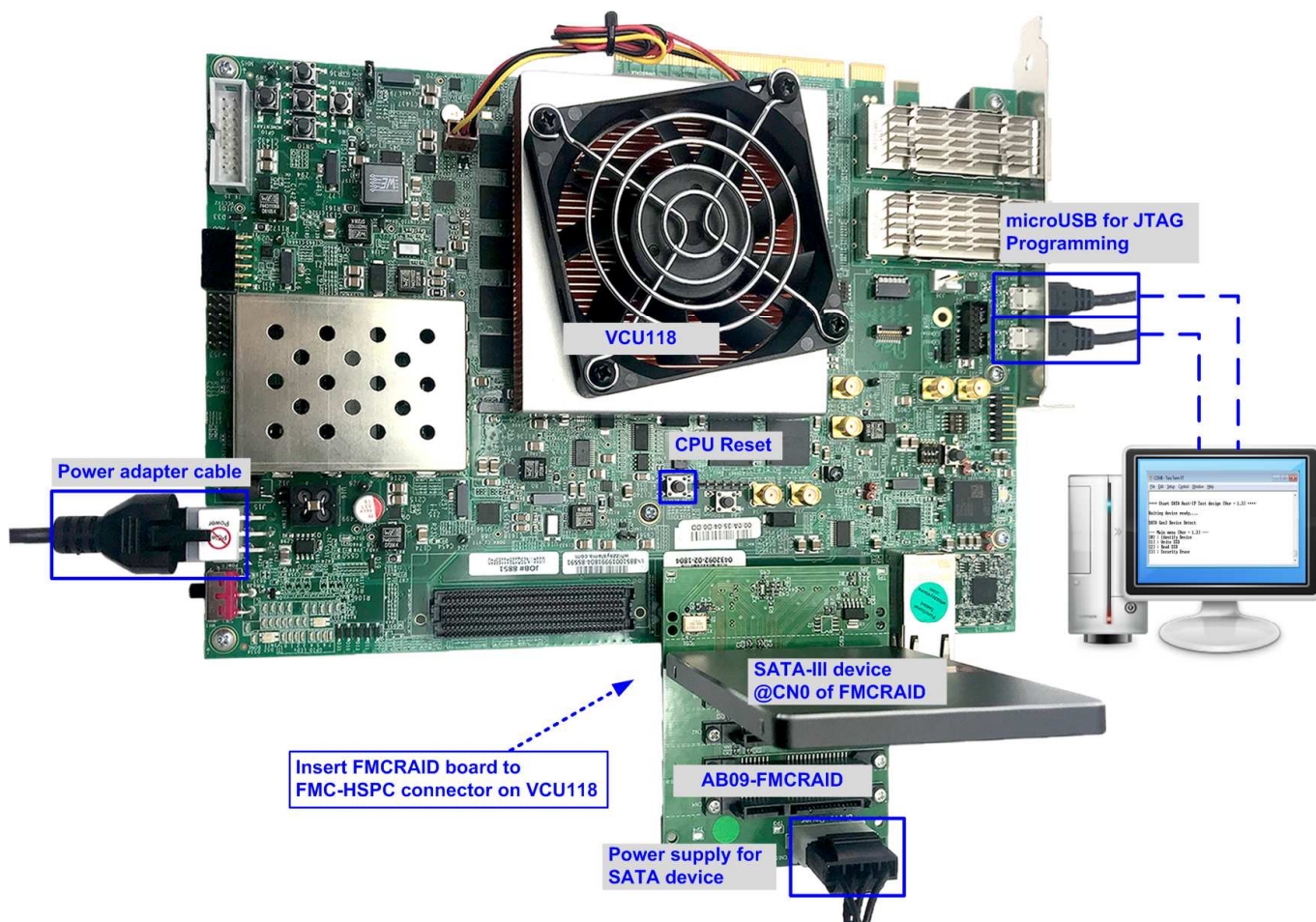


Figure 1-8 HCTL-IP demo setup on VCU118

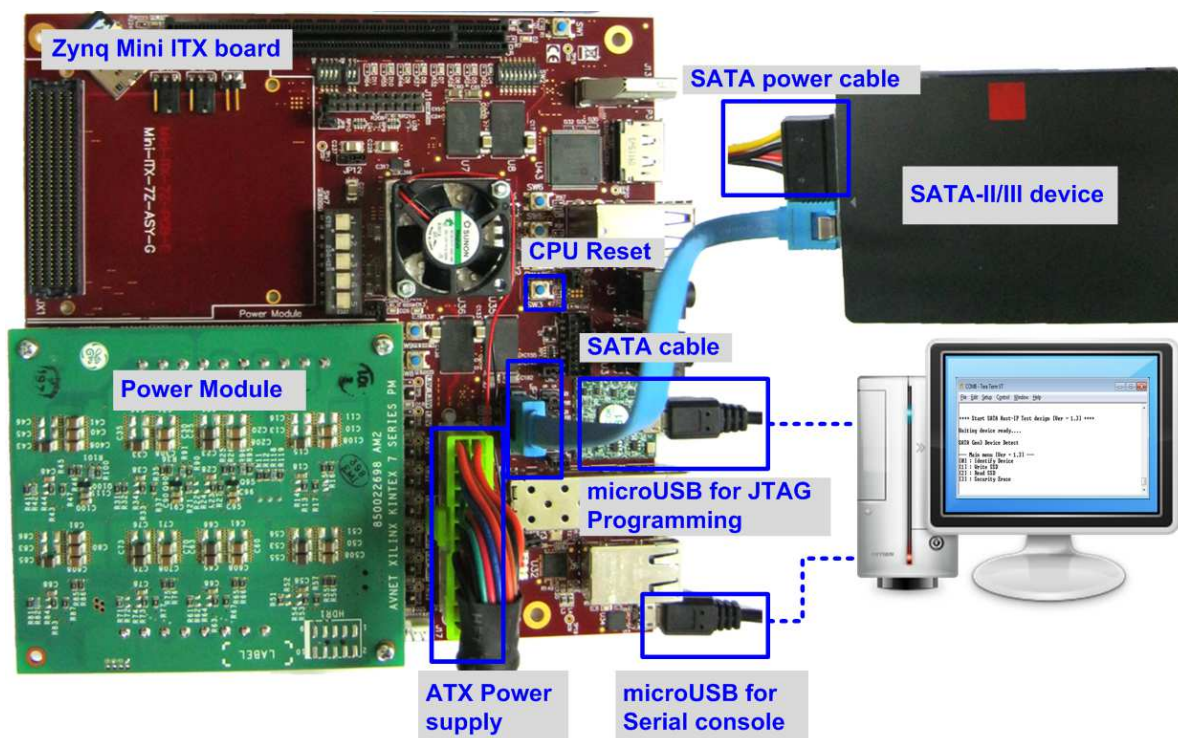


Figure 1-9 HCTL-IP demo setup on Zynq Mini-ITX

## 2 Demo setup

- 1) Power off system.
- 2) Set up board option.
  - a) For AC701 board, connect CLK SMA board to the board.



Figure 2-1 Connect CLK SMA board to AC701

- b) For ZC706 board,
  - i. Set SW11="00000" to configure PS from JTAG, as shown in Figure 2-2.
  - ii. Set SW4="01" to connect JTAG with USB-to-JTAG interface, as shown in Figure 2-3.

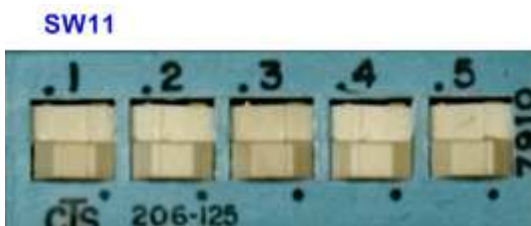


Figure 2-2 SW11 setting to configure PS from JTAG on ZC706 board



Figure 2-3 SW4 setting to use USB-to-JTAG on ZC706 board

- c) For Zynq Mini-ITX board only,
  - i. Set SW7="00000" to configure PS from JTAG, as shown in Figure 2-4.
  - ii. As shown in Figure 2-5, install a jumper on JP1 pins 1-2 to enable JTAG chain.
  - iii. Install the power module onto the board via J8, J9, J10 connectors.
  - iv. Connect ATX power cable to FPGA board via P2 connector.

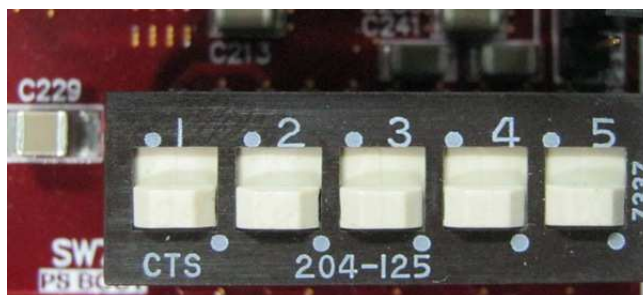


Figure 2-4 SW7 setting to configure PS from JTAG on Zynq Mini-ITX

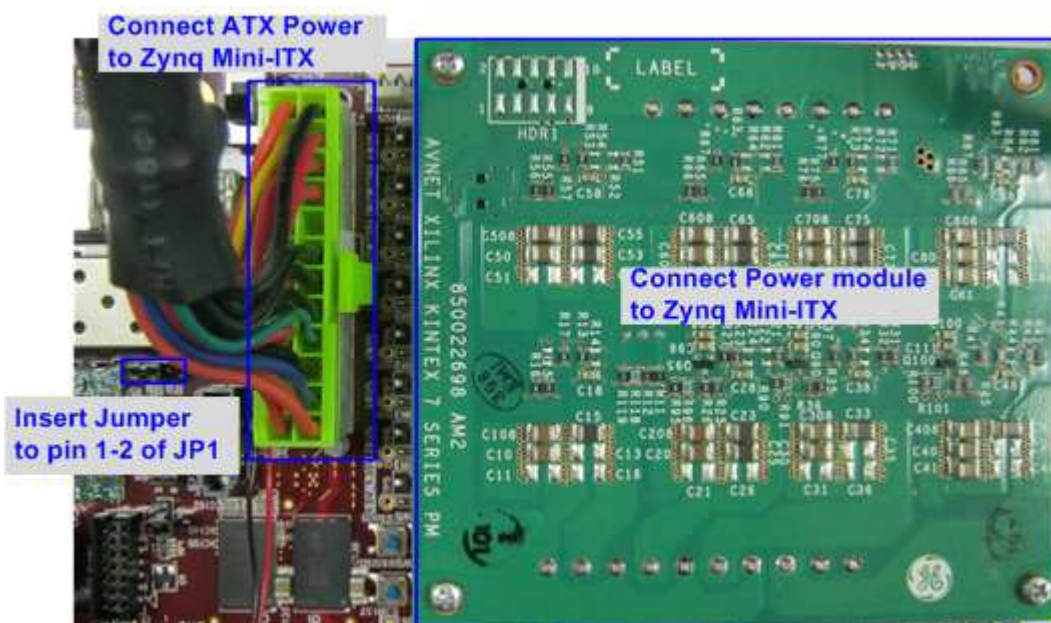


Figure 2-5 The power module installed onto the board

- d) For ZCU102, set SW6="0000" (SW = ON) to configure PS from JTAG, as shown in Figure 2-6.



Figure 2-6 SW6 setting to configure PS from JTAG on ZCU102

- 3) Connect the SATA-II/III device to the board by the following steps.
    - a) For Xilinx board,
      - i. Connect AB09-FMCRAID board to FMC connector on Xilinx board following Figure 1-1 - Figure 1-9.
      - ii. Connect SATA-II/III device to CN0 on FMCRAID board.  
*Note: KCU105/ZCU102/VCU118 supports only SATA-III device.*
      - iii. Connect power to power connector on FMCRAID board.
- The connection on AB09 is shown in Figure 2-7.

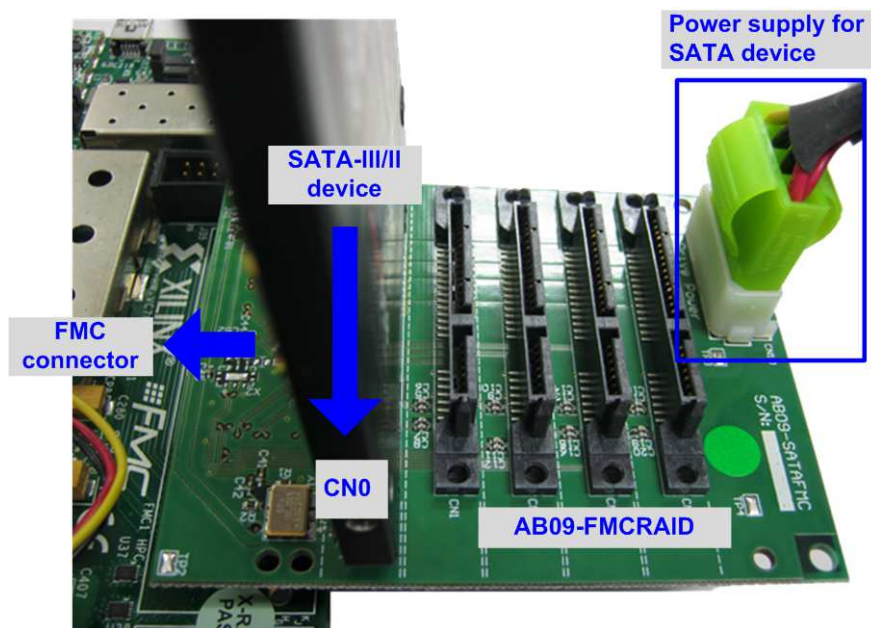


Figure 2-7 AB09-FMCRAID connection

- b) For Zynq Mini-ITX board,
    - i. Connect the device to the SATA connector (J12) on the board using SATA cable.
    - ii. Connect SATA Power cable to the device.
- The connection on Zynq Mini-ITX is shown in Figure 2-8.

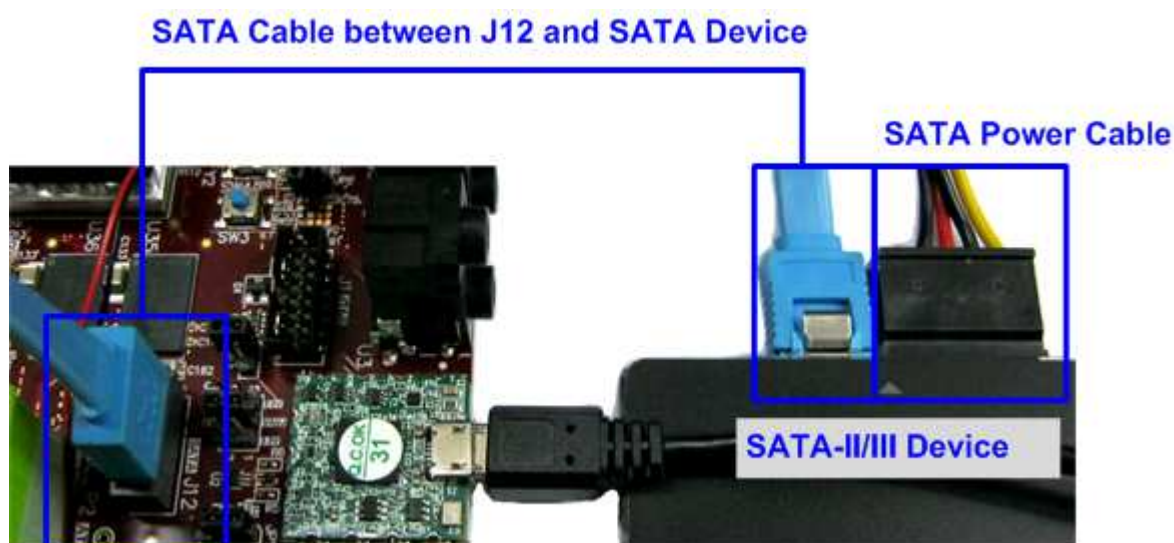


Figure 2-8 SATA-II/III device connection for Zynq Mini-ITX



- 4) Connect micro USB cable from FPGA board to PC for JTAG programming
- 5) Connect mini/micro USB cable from FPGA board to PC for Serial console.



Figure 2-9 USB cable connection

- 6) Power on FPGA board and power supply for SATA device.
- 7) Open Serial console such as TeraTerm, HyperTerminal. Set Buad rate=115,200 Data=8 bit Non-Parity Stop=1.
- 8) a) For Zynq device board (Zynq Mini-ITX/ZC706/ZCU102), open Vivado TCL shell. Change current directory to ready\_for\_download. Next, run BoardName\_HSataIPTest.bat (zc706\_HSataIPTest.bat, zcu102\_HSataIPTest.bat, MiniITX\_7z045\_HSataIPTest.bat), as shown in Figure 2-10

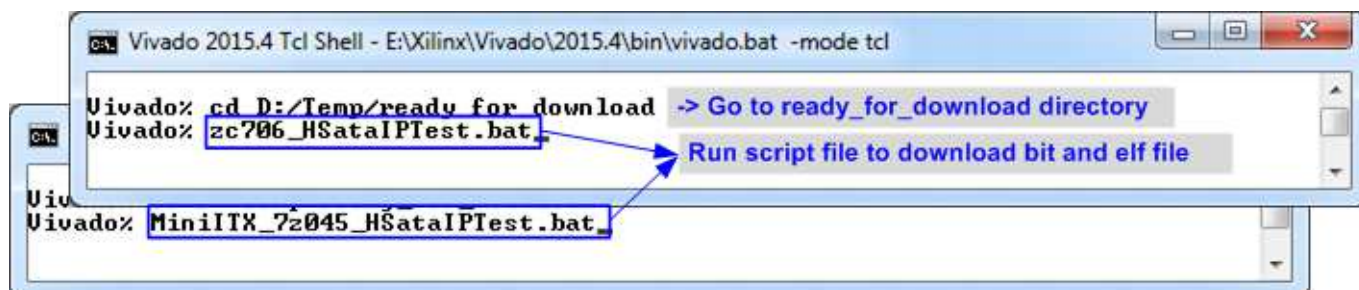


Figure 2-10 Command script for download demo file on Zynq device board

b) For AC701/KC705/VC707/VC709/KCU105/VCU118 board, use Vivado tool to download configuration file which includes CPU firmware, as shown in Figure 2-11.

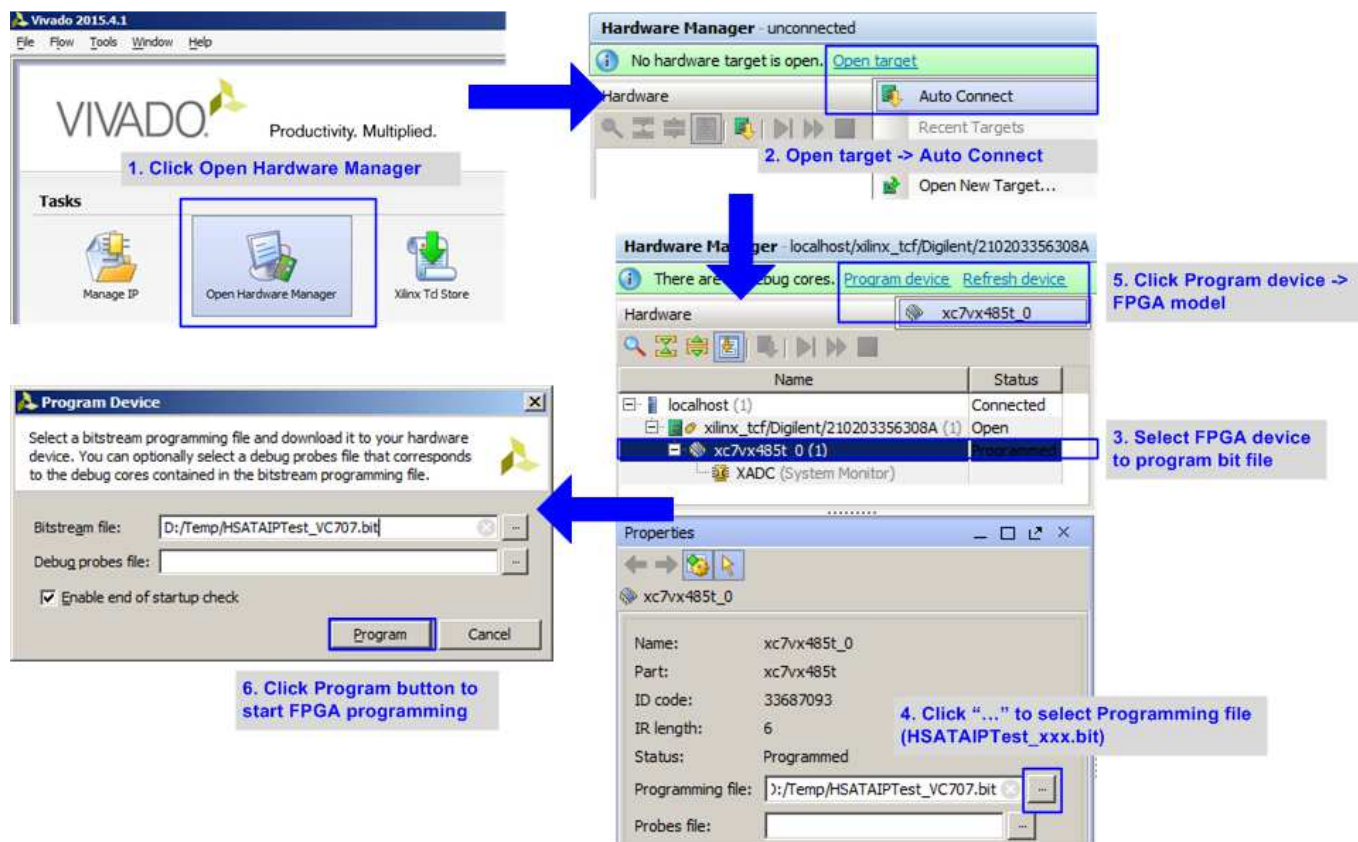


Figure 2-11 Programmed by Vivado

9) Check LED status on FPGA board. The description of LED is as follows.

GPIO LED	ON	OFF
0/D4	Normal operation	System is in reset condition
1/R/D5	System is busy	Idle status
2/C/D6	Error detect	Normal operation
3/L/D7	Data verification fail	Normal operation

Table 1 LED Definition

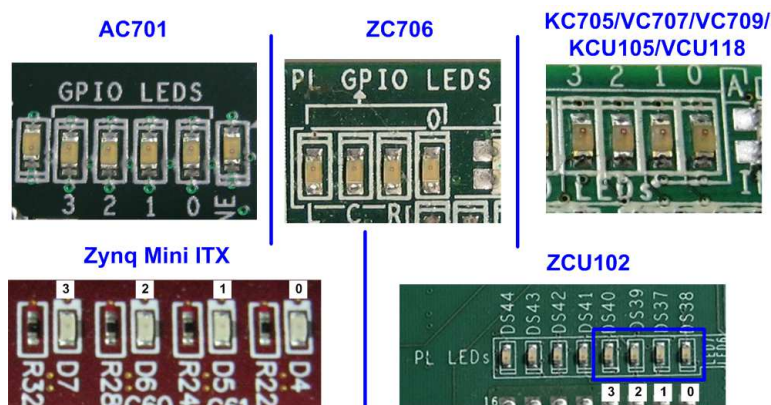


Figure 2-12 4-bit LED Status for user output

10) After programming completely, LED[0] and LED[1] are ON during SATA initialization process. Then, LED[1] changes to OFF after SATA completes initialization process and system is ready to receive command from user. After that, main menu is displayed, as shown in Figure 2-14.

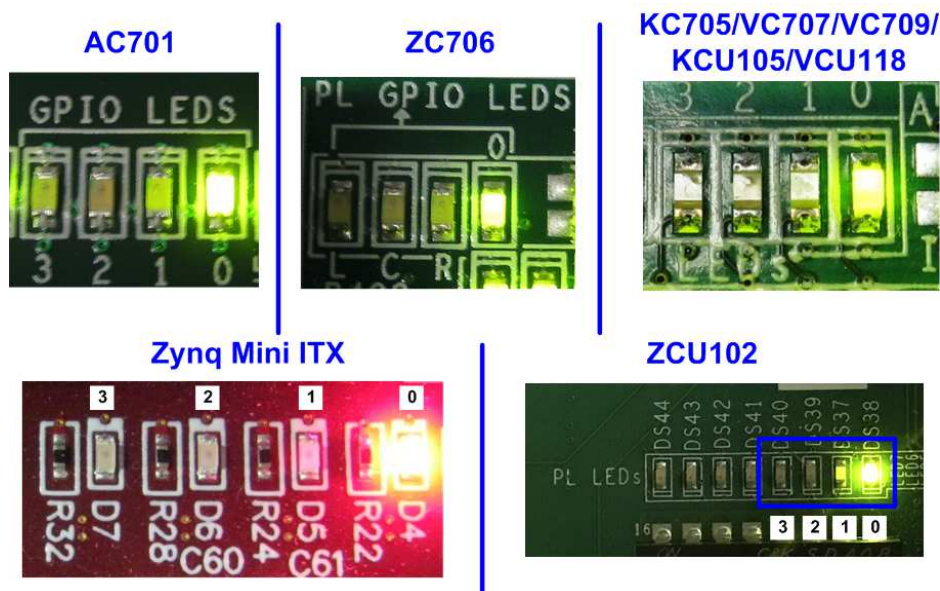


Figure 2-13 LED status after program configuration file and SATA initialization complete

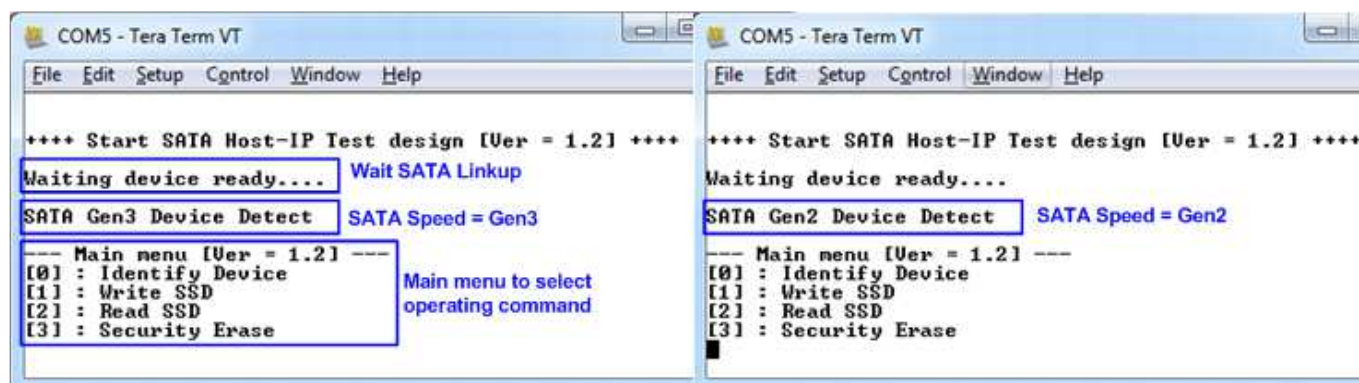


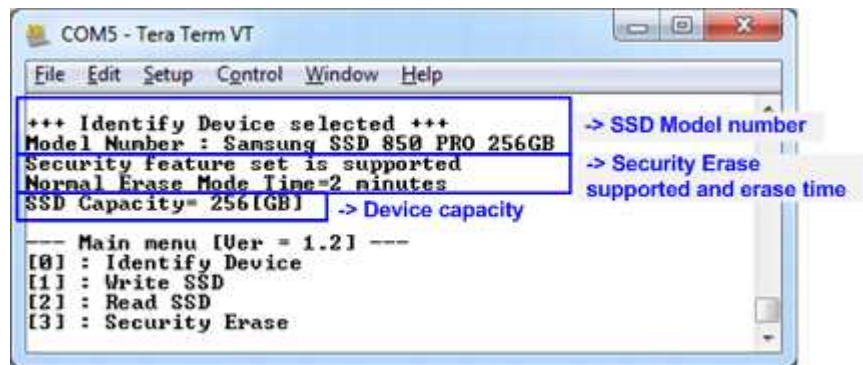
Figure 2-14 Main menu after program configuration file and SATA initialization complete

## 3 Test Menu

### 3.1 Identify Device

Select '0' to send Identify device command to SATA device. When operation is completed, all information is displayed on the console, i.e.

- 1) Device Model number
- 2) Security feature set is supported or not. If device is not supported, user must not run menu 3 to test Security erase command.
- 3) Normal Erase Mode Time: This is estimation time to complete Security erase command. Minimum valid value is 2 minutes. This information is displayed when the device supports Security feature set.
- 4) Device capacity which is output from HCTL-IP.



```
COM5 - Tera Term VT
File Edit Setup Control Window Help
+++ Identify Device selected +++
Model Number : Samsung SSD 850 PRO 256GB
Security feature set is supported
Normal Erase Mode Time=2 minutes
SSD Capacity= 256[GB]
--- Main menu [Ver = 1.2] ---
[0] : Identify Device
[1] : Write SSD
[2] : Read SSD
[3] : Security Erase
```

Figure 3-1 Result from Identify Device menu

### 3.2 Write Device

Select '1' to send Write command to SATA device. Three inputs are required for this menu.

- 1) Start LBA: Input start address of SATA device in sector unit. The input is decimal unit when input only digit number. User can add "0x" to be prefix when input is hexadecimal unit.
- 2) Sector Count: Input total transfer size in sector unit. The input is decimal unit when input only digit number. User can add "0x" to be prefix when input is hexadecimal unit.
- 3) Test pattern: Select test pattern of test data for writing to SATA device. Five patterns can be selected, i.e. 32-bit increment, 32-bit decrement, all 0, all 1, and 32-bit LFSR counter.

As shown in Figure 3-2, if all inputs are valid, the operation will be started. During writing data, current transfer size is displayed on the console to show that system still run. Finally, test performance, total size, and total time usage are displayed on the console as test result.

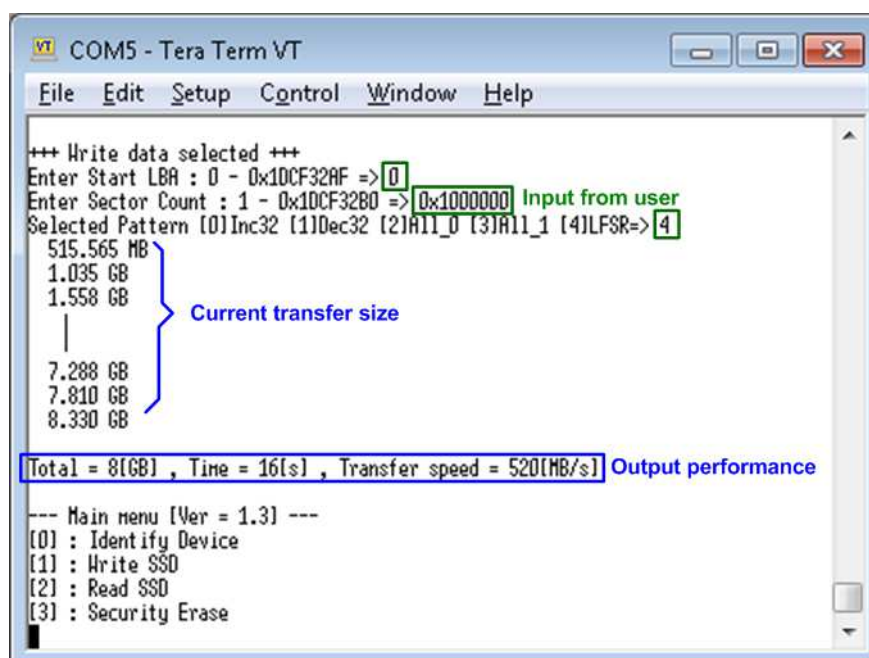


Figure 3-2 Input and result of Write Device menu

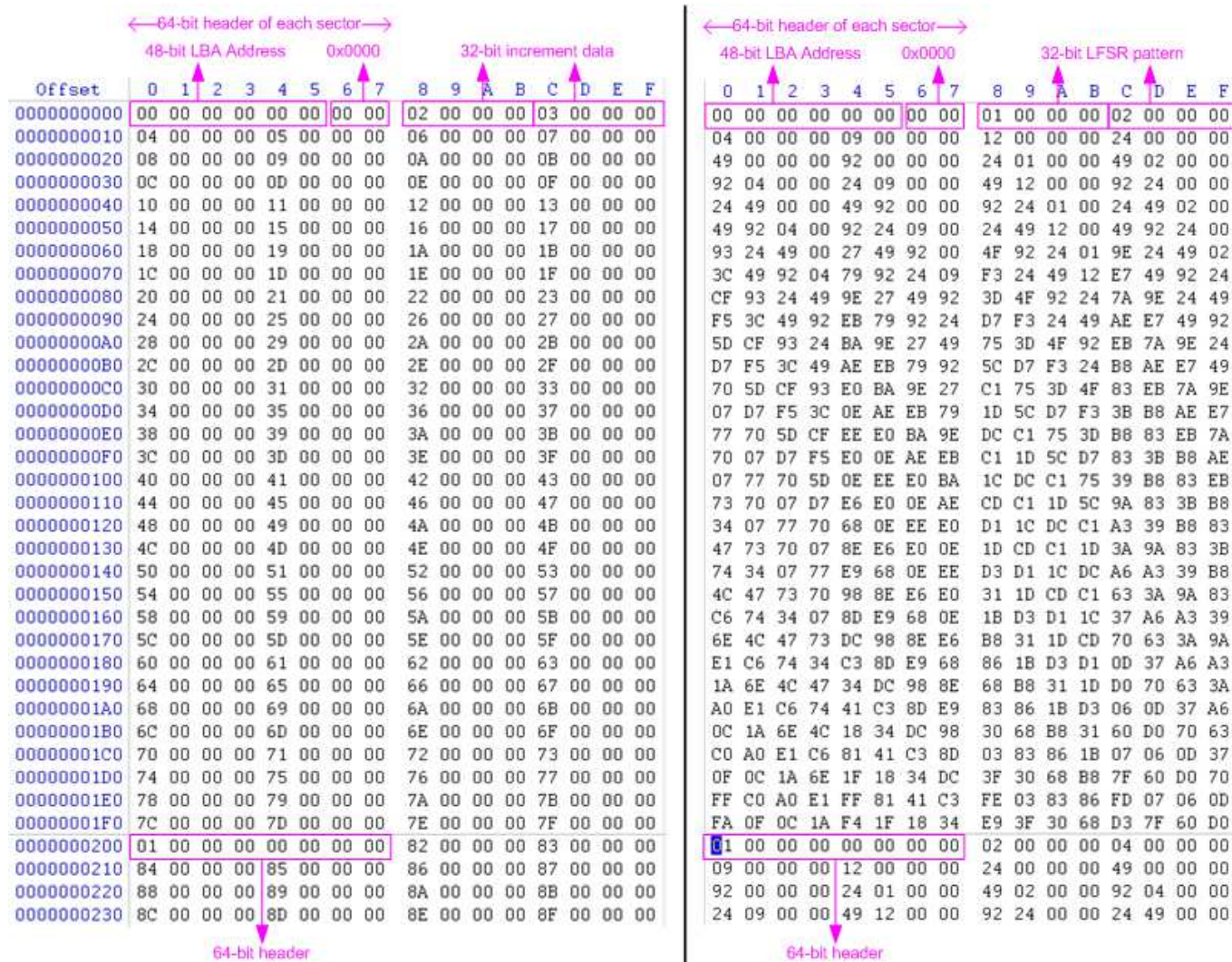


Figure 3-3 Example Test data in sector#0/#1 by increment/LFSR pattern

Test data of each sector has different 64-bit header which consists of 48-bit LBA address and 16-bit of zero value. 48-bit LBA address is unique value for each sector. The data after 64-bit header is the test pattern which is selected by user. The example of test pattern is shown in Figure 3-3. 32-bit increment pattern is in left window and 32-bit LFSR pattern is in right window.

Figure 3-4 – Figure 3-6 show error message when user input is invalid. “Invalid input” message is displayed on the console. Then, it returns to main menu to receive new command.

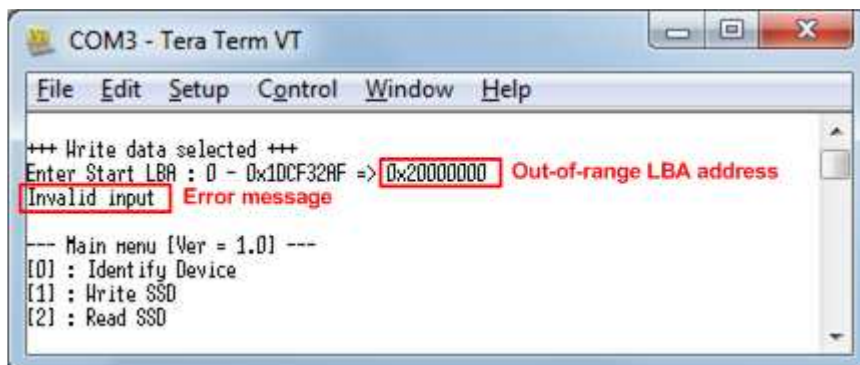


Figure 3-4 Invalid Start LBA input

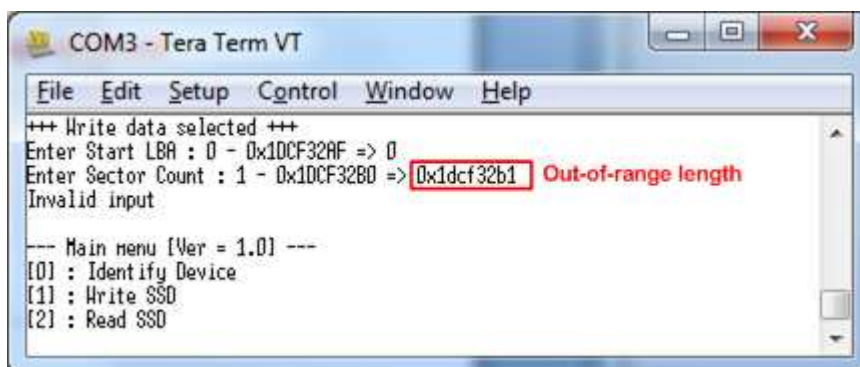


Figure 3-5 Invalid Sector count input

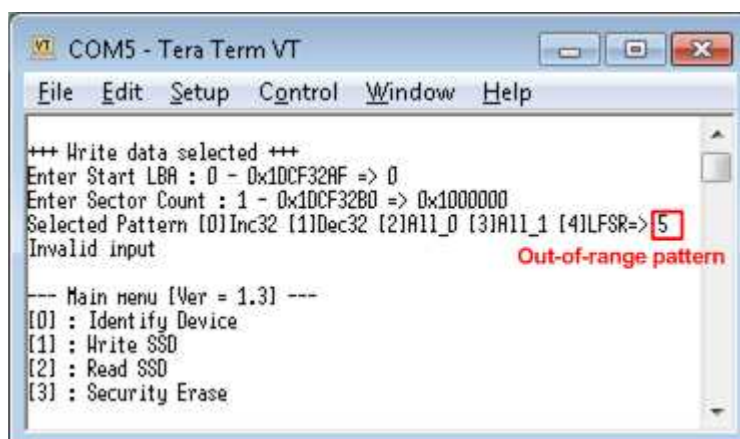
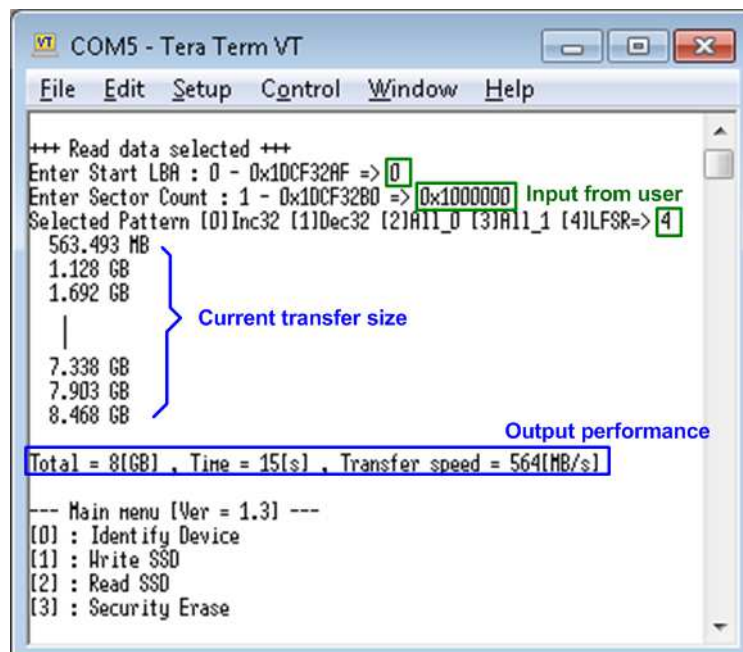


Figure 3-6 Invalid Test pattern input

### 3.3 Read Device

Select '2' to send Read command to SATA device. Three inputs are required for this menu.

- 1) Start LBA: Input start address of SATA device in sector unit. The input is decimal unit when input only digit number. User can add "0x" to be prefix when input is hexadecimal unit.
- 2) Sector Count: Input total transfer size in sector unit. The input is decimal unit when input only digit number. User can add "0x" to be prefix when input is hexadecimal unit.
- 3) Test pattern: Select test pattern to verify data from SATA device. Test pattern must be matched with the test pattern using in Write Command menu. Five patterns can be selected, i.e. 32-bit increment, 32-bit decrement, all 0, all 1, and 32-bit LFSR counter.



```

COM5 - Tera Term VT
File Edit Setup Control Window Help

+++ Read data selected +++
Enter Start LBA : 0 - 0x10CF32AF => 0
Enter Sector Count : 1 - 0x10CF32B0 => 0x1000000 Input from user
Selected Pattern (0)Inc32 (1)Dec32 (2)A11_0 (3)A11_1 (4)LFSR=> 4
563.493 MB
1.128 GB
1.692 GB
|
7.338 GB
7.903 GB
8.468 GB
} Current transfer size

Output performance
Total = 8[GB] , Time = 15[s] , Transfer speed = 564[MB/s]

--- Main menu [Ver = 1.3] ---
(0) : Identify Device
(1) : Write SSD
(2) : Read SSD
(3) : Security Erase

```

Figure 3-7 Input and result of Read Device menu

Similar to Write Command menu, if all inputs are valid, test system will read data from SATA device. Test performance, total size, and total time usage are displayed after end of transfer. "Invalid input" will be displayed if some inputs are out-of-range.



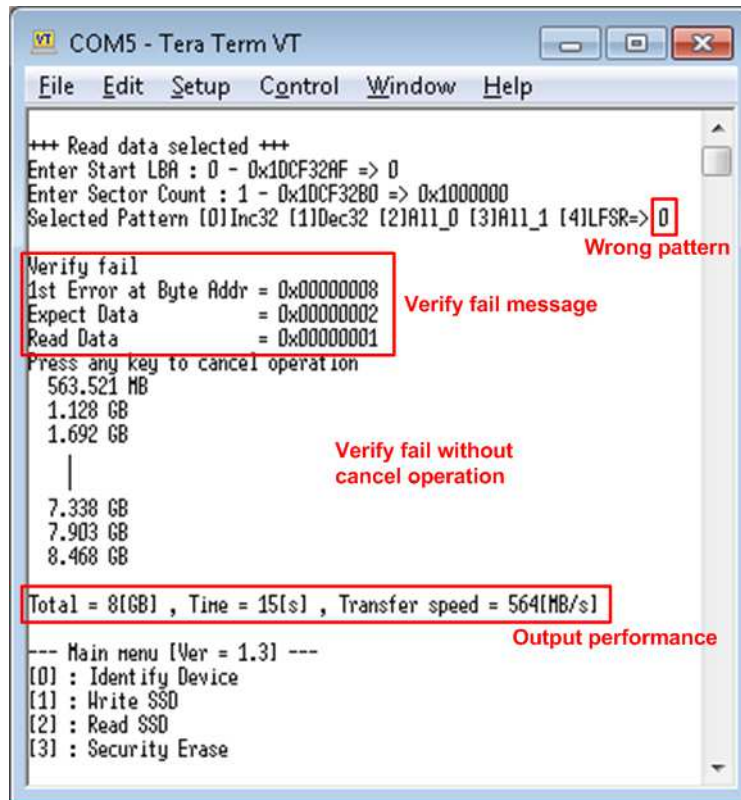


Figure 3-8 Data verification is failed but wait until read complete

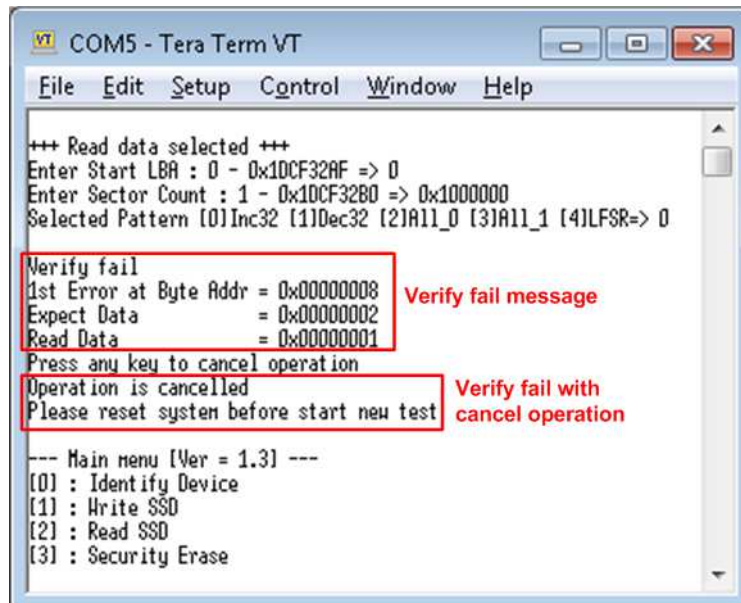


Figure 3-9 Data verification is failed and press any key to cancel operation

Figure 3-8 and Figure 3-9 show the error message when data verification is failed. “Verify fail” is displayed with error address, expected data, and read data. User can press any key to cancel read operation or wait until all read process complete.

In case of cancel operation, the previous command does not complete in good sequence. It is recommended to power-off/on SATA device and press “RESET” button to restart system.

### 3.4 Security erase

Select '3' to send Security Erase command to SATA device. Please confirm that SATA device supports Security Erase feature by using Identify device menu. The estimation time of security erase is also displayed in Identify device menu.

After selecting the menu, confirmation message is displayed on the console. User inputs 'y' or 'Y' to continue Security erase operation or input other keys to cancel operation.

Number 0-9 is displayed on the console every second to show that system still run. After complete the operation, total time usage is displayed as shown in Figure 3-10.

Figure 3-11 shows the example when user inputs other keys to cancel the command.

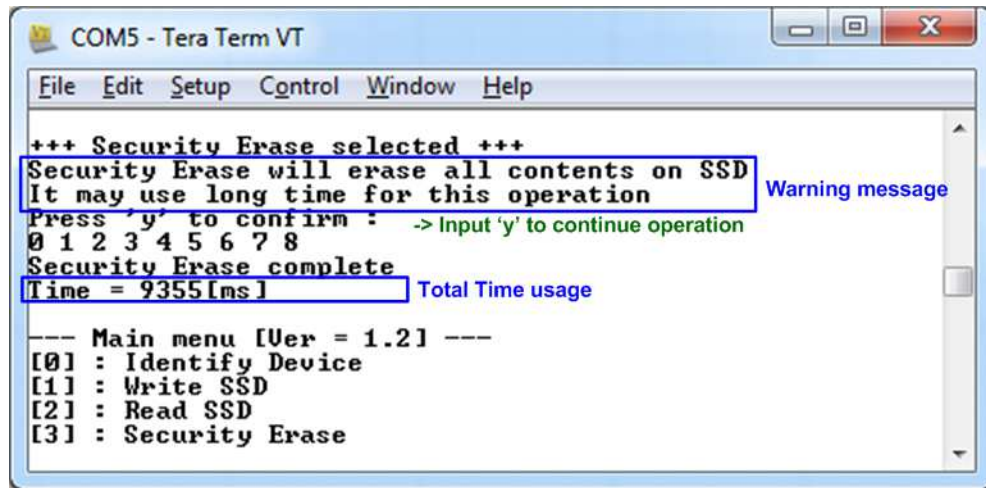


Figure 3-10 Result from Security Erase command

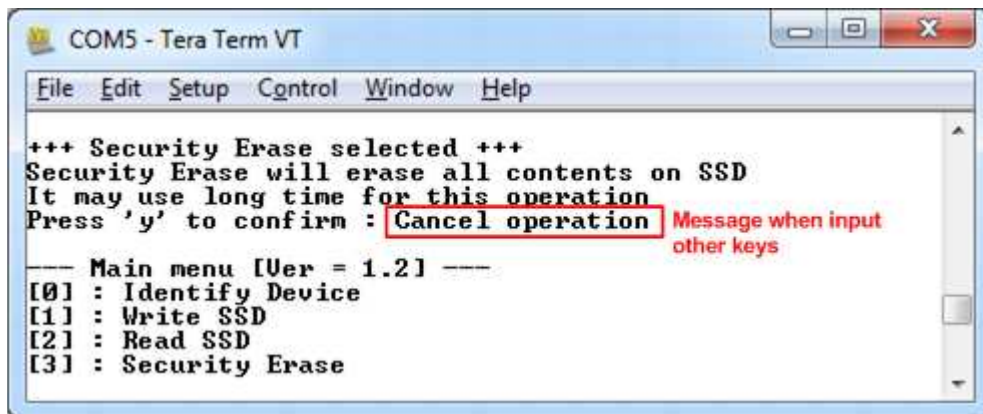


Figure 3-11 Cancel Security Erase command

## 4 Revision History

Revision	Date	Description
1.0	15-Oct-14	Initial version release
1.1	3-Apr-15	Add ZC706 support
1.2	30-Aug-16	Add CPU and support KCU105 board
1.3	29-Sep-16	Add Zynq Mini-ITX support
1.4	9-Nov-16	Add Security erase command and VC709 support
1.5	1-Aug-17	Add LFSR pattern
1.6	15-Jan-18	Add ZCU102 support
1.7	26-Apr-18	Add VCU118 support